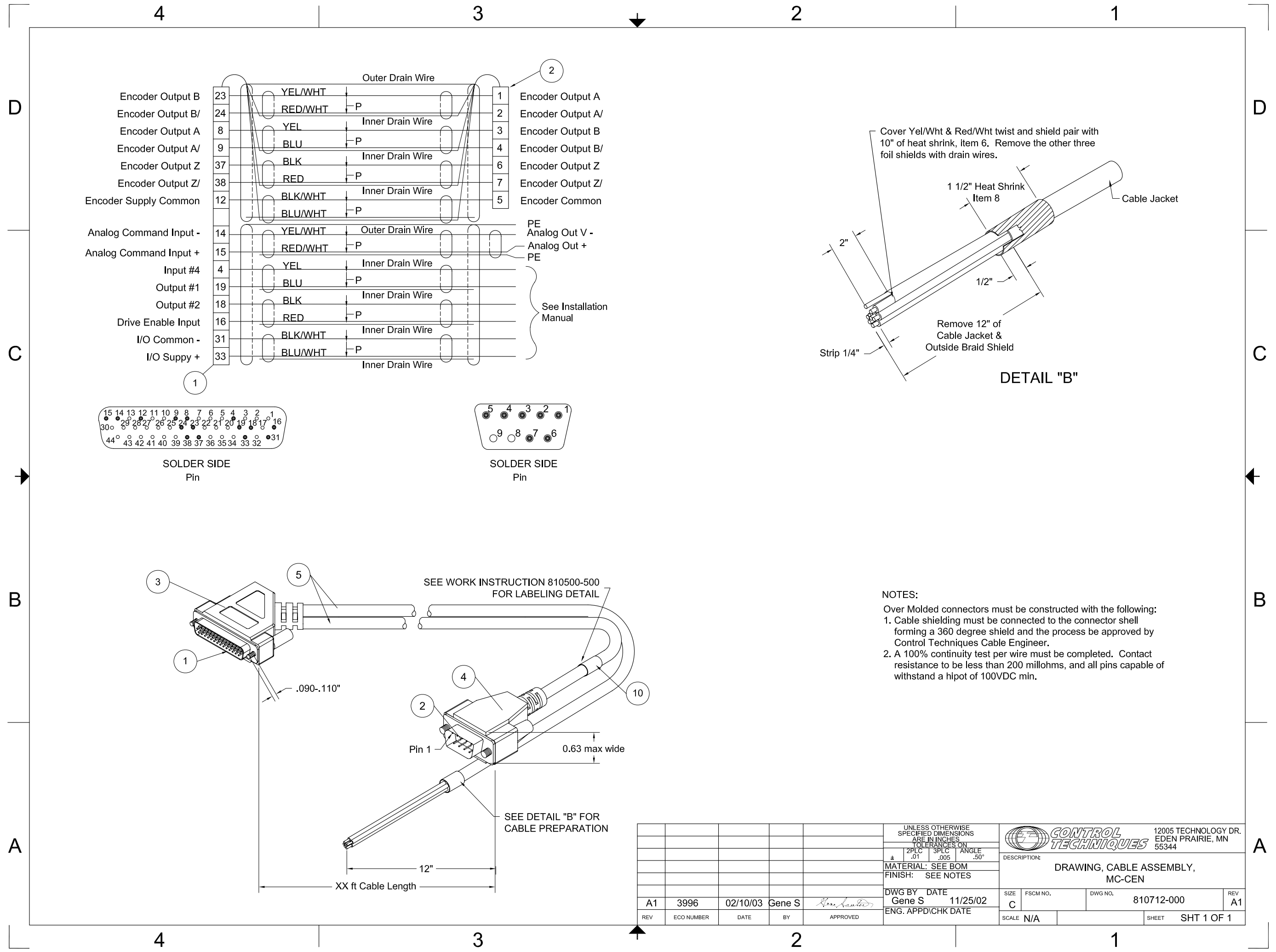


C:\Documents and Settings\acolombo\Desktop\TEMP\810712-000-A1-2D.dwg, 7/8/2008 10:20:45 AM



- NOTES:**
- Over Moulded connectors must be constructed with the following: Cable shielding must be connected to the connector shell forming a 360 degree shield and the process be approved by Control Techniques Cable Engineer.
 - A 100% continuity test per wire must be completed. Contact resistance to be less than 200 milliohms, and all pins capable of withstand a hipot of 100VDC min.

UNLESS OTHERWISE SPECIFIED DIMENSIONS ARE IN INCHES							12005 TECHNOLOGY DR. EDEN PRAIRIE, MN 55344	
TOLERANCES ON					DESCRIPTION:		DRAWING, CABLE ASSEMBLY, MC-CEN	
± 2PLC .01 3PLC .005 ANGLE .50°					MATERIAL: SEE BOM		SIZE C FSCM NO. DWG NO. 810712-000 REV A1	
FINISH: SEE NOTES					DWG BY DATE Gene S 11/25/02		SCALE N/A SHEET SHT 1 OF 1	
ENG. APPD/CHK DATE					REV A1			
REV	ECO NUMBER	DATE	BY	APPROVED				